

## Bittern Close, St. Ives, PE27 6SY

Guide Price £290,000

3 1 2

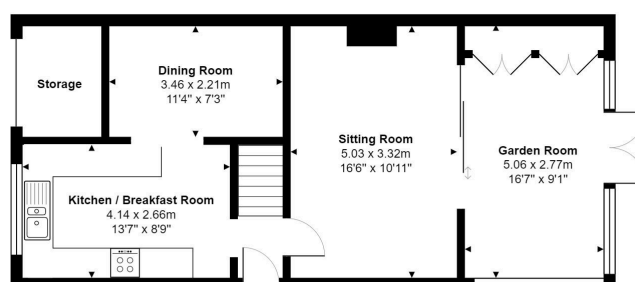


An extended three bedroom, semi detached house.

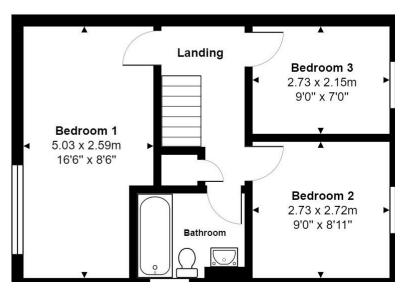
## Key Features

- Semi Detached House
- Three Bedrooms
- Extended and Updated
- Re-fitted Kitchen
- Dining Room and Sun Room
- New Boiler Installed Approx Two Years Ago
- Well Presented Throughout
- Close to Schools and Amenities
- Virtual Tour Available Upon Request
- EPC Rating: D/66

Ground Floor



First Floor



Total Area: 91.0 m<sup>2</sup> ... 979 ft<sup>2</sup> (excluding storage)

All measurements are approximate and for display purposes only